

The RED Project

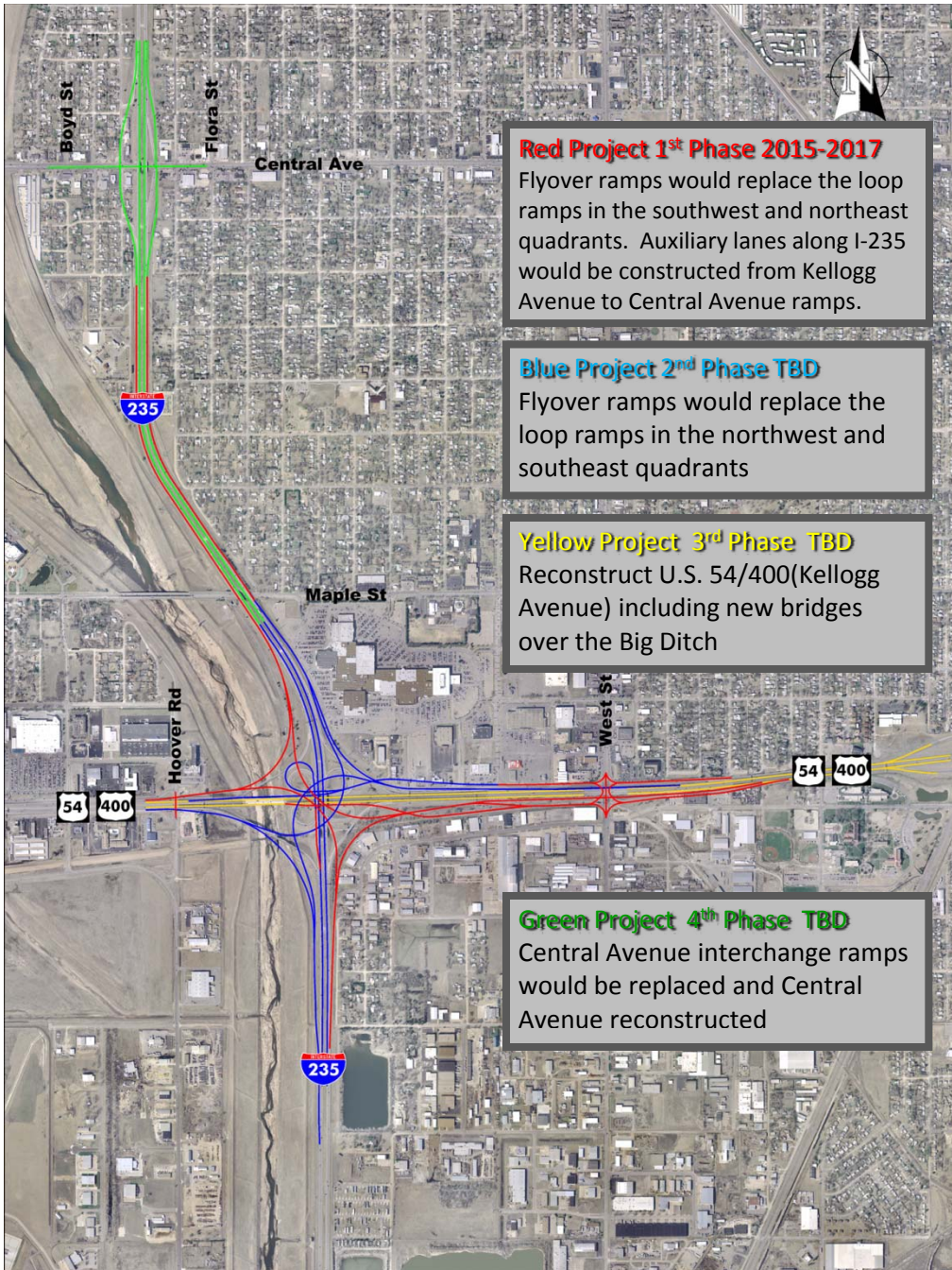
A study completed in 2007 identified safety and operational concerns with the I-235 interchanges at Kellogg Avenue and Central Avenue. Geometric improvements to these interchanges to safely and efficiently accommodate current and projected traffic volumes are the primary reason for the project. Because of the magnitude of the overall design, several individual projects have been developed. The RED project is the only phase of the I-235 and Kellogg Avenue interchange project that is funded through T-WORKS and local partnering. RED project construction is scheduled to begin in October 2015, as shown below.



The RED project includes a partial reconstruction of the I-235 and Kellogg Avenue interchange and will greatly improve highway safety and traffic flow. Construction includes fly-over ramps from I-235 southbound to Kellogg Avenue eastbound as well as I-235 northbound to Kellogg Avenue westbound. Improvements to the Kellogg Avenue and West Street interchange are also included. Additionally, auxiliary lanes along I-235 in both directions will be constructed between Maple and Central Avenues. These improvements increase safety by eliminating lane-weaving.

235-87 KA-0161-04	2005	2006	2007	2008	2009	2010	2011	2012	2013	2014	2015	2016	2017
CONCEPT STUDY													
Preliminary Design (ALL PROJECTS)													
Preliminary Design (RED PROJECT)													
Right-of-way process													
Final plans complete													
Bidding Process													
Construction													

Phasing Plan



This public meeting focuses upon the RED Project that is currently funded for design and construction. The next step in the design process is to acquire right-of-way and coordinate with utilities for any relocation or adjustments. During this time, the design will be finalized and environmental clearance sought. A Contractor would be selected through the bidding process. Construction of the RED project would begin in October 2015.

Future construction phases will be further developed and constructed as funding permits. Separate public meetings would be held as appropriate for each project phase.

Traffic on I-235 and Kellogg Avenue will be maintained throughout construction. Traffic delays will likely increase during this time.

Visit the website: <http://kdotapp.ksdot.org/TWorks>

Details about the project can be found on the webpage www.235kelloggcentral.com or through the Kansas Department of Transportation's T-WORKS webpage listed above. You can give feedback on either website via e-mail. Feel free to contact the following staff with questions or comments on the project.

Scott King

KDOT Project Manager
785.296.6970
sking@ksdot.org

Tom Hein

KDOT Public Affairs
316.660.4990
hein@ksdot.org